

SIDDHA
SERENA
~ Apartments ~

Home to Serenity and Calm

A name that tells its story

- ~ A tranquil paradise.
- ~ Best in living comforts.
- ~ Enveloped with water + green.
- ~ Light + air duet in ballet.
- ~ Balancing the body + soul.





Why Siddha Serena?

Different and attractive

- ~ Strategically located in the heart of New Town.
- ~ 100% Vastu compliant.
- ~ Ultra-modern living.
- ~ Serene environment.
- ~ With Nature in abundance.



The magnificent towers



Artist Impression

Serene and tranquil living in the laps of nature



Elegantly designed



Artist Impression

Beautiful marvels



Artist Impression

The entrance

SIDDHA
SERENA
~ Apartments ~



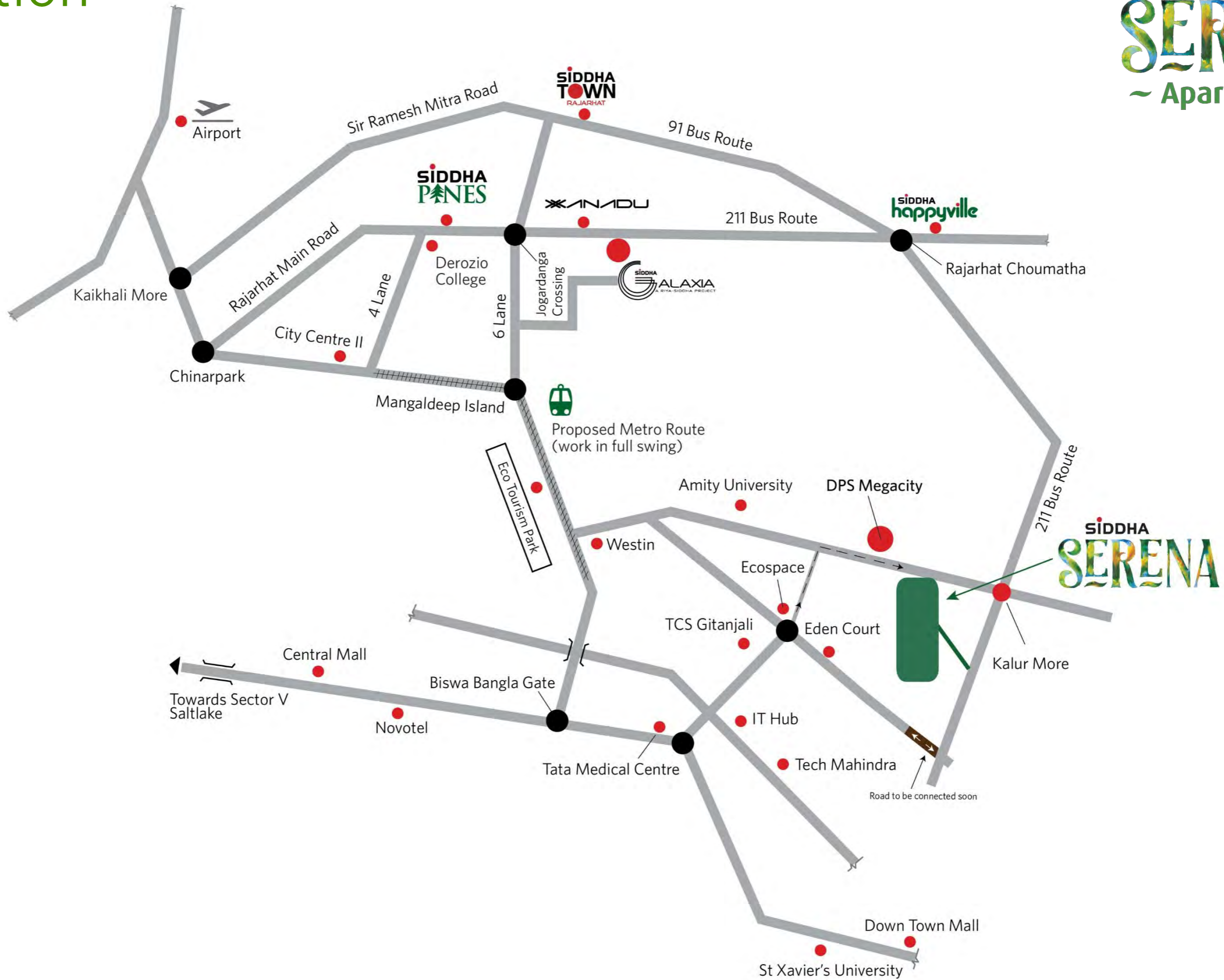
Artist Impression

SIDDHA

Bird's eye view



Location



MAP NOT TO SCALE

*For internal circulation only

Easy access

DPS Megacity School	3 min
Eco Space	5 min
Tata Medical Centre	8 Min
Amity University	10 Min
Eco Park	10 Min
DownTown Mall	15 Min
City Centre II	17 Min
Airport	25 Min

All figures based on public transport & estimated

The project

Tower 1, 2 & 3

G+32 Floors

1 BHK | 2 BHK | 3 BHK | 4 BHK

444 - 1281 sq ft Carpet Area

Clubhouse

G+2 Floors

Amenities

Club amenities

Banquet hall

Indoor games room

Squash court

Kids play room

Party hall

Movie theatre

Multi-purpose hall

Yoga

Massage room

Gym

Open multi-purpose court

Podium amenities

Reflective pond

Iconic pool

Pool deck

Swimming pool

Garden sunken seating

Playground

Lawn courtyard

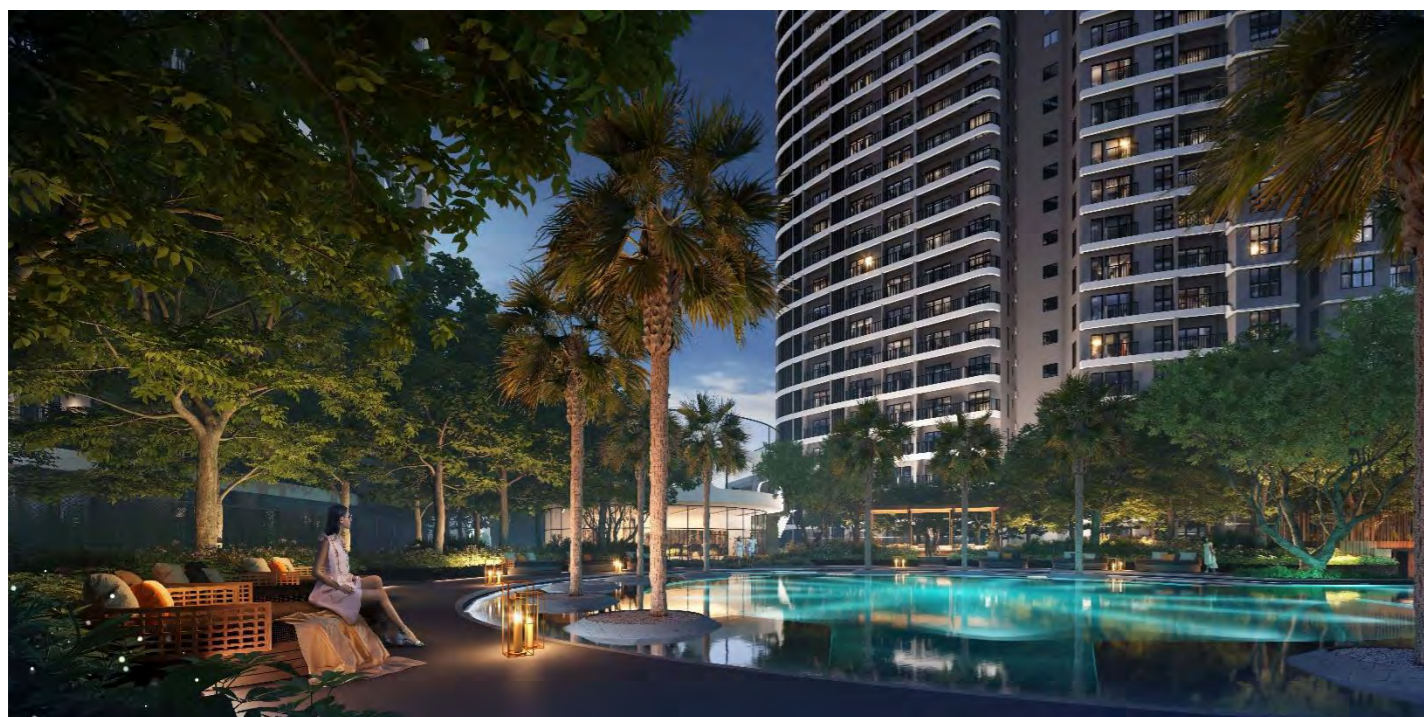
Garden pavilion

Feature bridge

Hilly garden

Open oval lawn

The Mesmerising Iconic Pool



Swim across tranquillity



Kid's Pool



Artist Impression

Swimming Pool

Feature bridge



Artist Impression

Kids' play area with Treehouse



Artist Impression

Relax and unwind pool side Cabana



Artist Impression

Vast open areas



Artist Impression

The ultra modern club



Artist Impression

Club terrace amenities



Artist Impression

Club amenities



Gym



Kids play room



Indoor games room

Artist Impression

Club amenities



Squash court

Artist Impression



Theatre



Banquet hall

Facilities

Fire fighting system

Sewage treatment plant

Rainwater harvesting system

Power back-up facility (Limited for apartments & common Areas)

24x7 Water supply

24x7 Security and surveillance

High speed elevators

Cable TV & Broadband point

Specifications

Structure

Earthquake resistant RCC framed structure

Door

Shutter – solid core flush shutters | Frame – Solid Timber frames

Hardware

Mortise lock and handle

Windows

Anodised | Powder coated aluminum frames with fully glazed shutters.

Staircase

Marble | Kota | IPS

Flooring & Tiling: Internal

Bedroom ~ Vitrified tiles

Living | Dining ~ Vitrified tiles

Toilet Floor ~ Anti-skid ceramic tiles

Toilet Wall ~ Ceramic tiles

Kitchen floor ~ Vitrified tiles Kitchen dado ~ Ceramic tiles

Kitchen counter ~ Granite above Kadappa stone

Balcony ~ Tiles | Anti-skid ceramic tiles

Lobby ~ Vitrified tiles

Lift facia ~ Marble | Granite | Laminate finish

Sanitaryware

Chromium plated fittings, white, high quality porcelain fixtures.

External

Driveway | Covered car parking | Courtyard | Paver block

Kota | Granite | Grass paver | VDF (Vacuum dewatering concrete flooring)

Electricals

Superior quality concealed copper wiring.

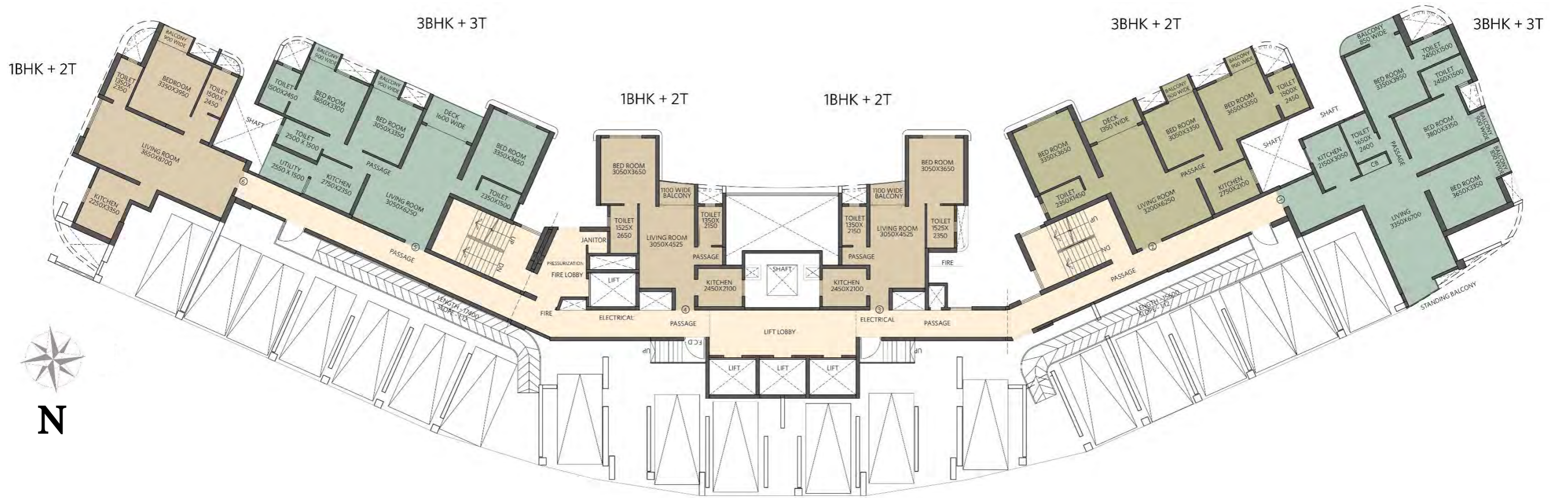
Latest modular switches and miniature circuit breakers, TV socket and broadband point.

Exterior

Latest weatherproof exterior finish paint.

Plans

TOWER 1 NUTOPIA – First Floor Plan



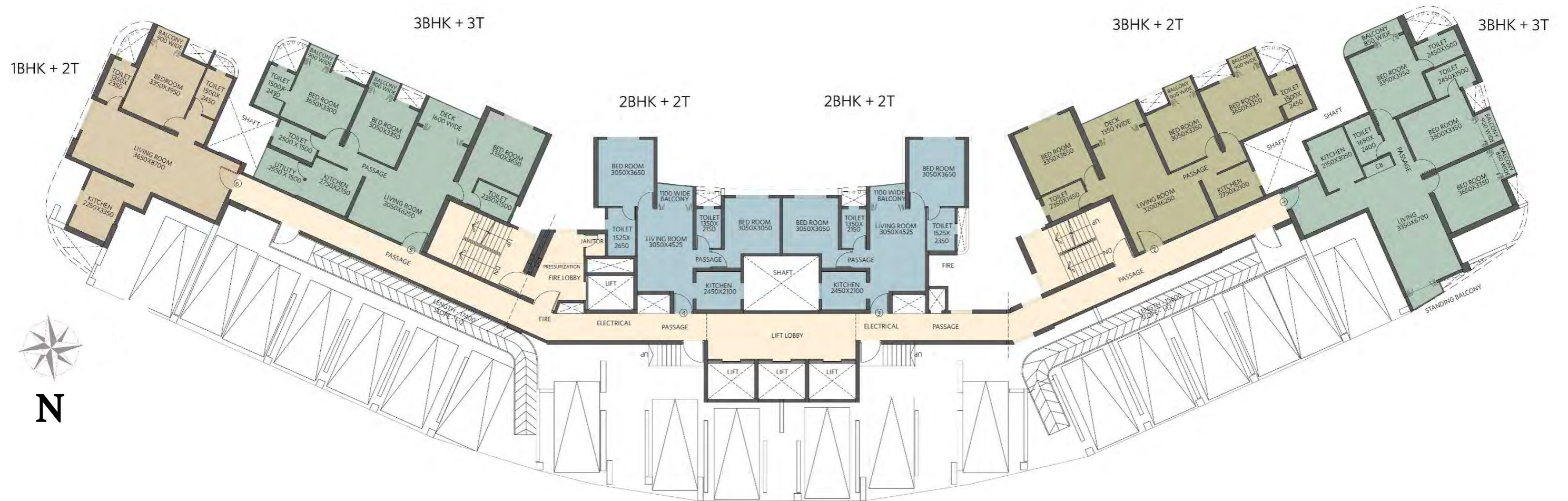
Flat	Type	BUA (Sq. ft.)	CA without Balcony	BA	CA with Balcony
1	3BHK + 3T	1230	1027	80	1107
2	3BHK + 2T	1055	869	77	946
3	1BHK + 2T	541	444	25	469
4	1BHK + 2T	544	449	25	474
5	3BHK + 3T	1159	963	83	1046
6	1BHK + 2T	786	675	17	692



FLAT 5 - 3BHK + 3T

*For internal circulation only

TOWER 1 NUTOPIA – Second Floor Plan



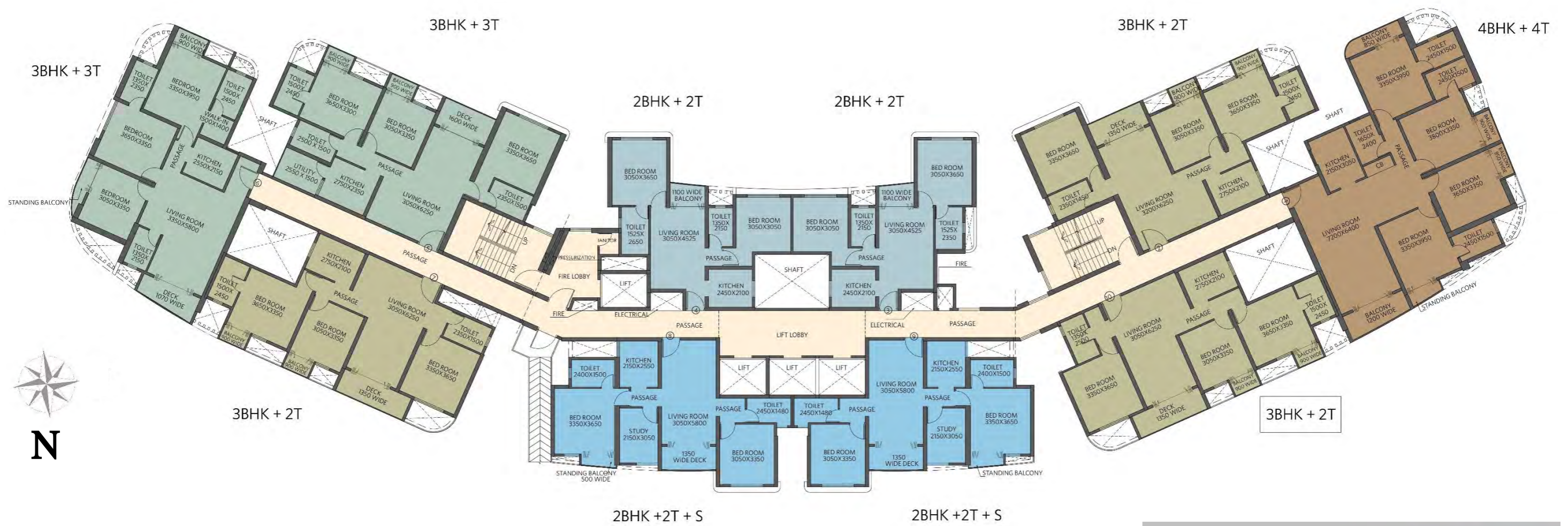
Flat	Type	BUA (Sq. ft.)	CA without Balcony	BA	CA with Balcony
1	3BHK + 3T	1230	1027	80	1107
2	3BHK + 2T	1055	869	77	946
3	2BHK + 2T	662	561	25	586
4	2BHK + 2T	665	566	25	591
5	3BHK + 3T	1159	963	83	1046
6	1BHK + 2T	786	675	17	692



FLAT 5 - 3BHK + 3T

*For internal circulation only

TOWER 1 NUTOPIA – Third Floor Plan



Flat v	Type	BUA (Sq. ft.)	CA without Balcony	BA	CA with Balcony
1	4BHK + 4T	1536	1281	134	1415
2	3BHK + 2T	1055	869	77	946
3	2BHK + 2T	662	561	25	586
4	2BHK + 2T	665	566	25	591
5	3BHK + 3T	1159	963	83	1046

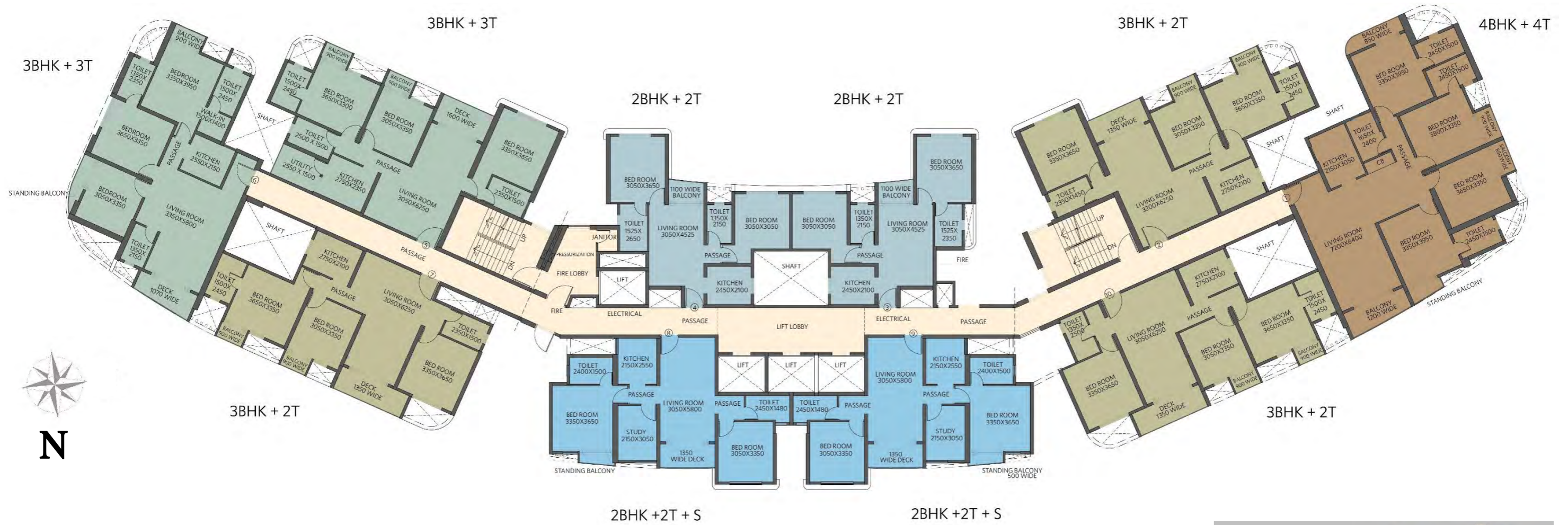
Flat	Type	BUA (Sq. ft.)	CA without Balcony	BA	CA with Balcony
6	3BHK + 3T	1138	945	89	1034
7	3BHK + 2T	1030	860	88	948
8	2BHK + 2T + S	870	730	57	787
9	2BHK + 2T + S	870	730	57	787
10	3BHK + 2T	1040	871	88	959



FLAT 3 - 2BHK + 2T

*For internal circulation only

TOWER 1 NUTOPIA - Typical Floor Plan - 4th - 6th, 8th - 11th, 13th - 16th, 18th - 21st, 23rd - 26th, 28th 30th & 32nd



Flat	Type	BUA (Sq. ft.)	CA without Balcony	BA	CA with Balcony
1	4BHK + 4T	1536	1281	134	1415
2	3BHK + 2T	1055	869	77	946
3	2BHK + 2T	662	561	25	586
4	2BHK + 2T	665	566	25	591
5	3BHK + 3T	1159	963	83	1046

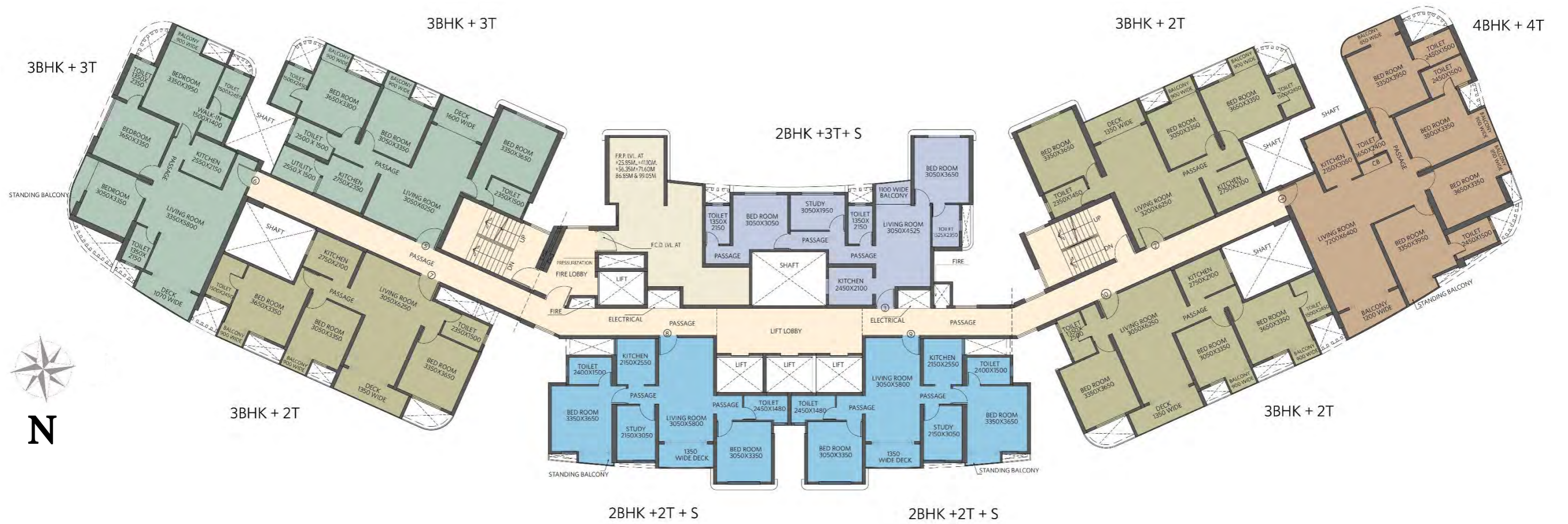
Flat	Type	BUA (Sq. ft.)	CA without Balcony	BA	CA with Balcony
6	3BHK + 3T	1138	945	89	1034
7	3BHK + 2T	1030	860	88	948
8	2BHK + 2T + S	870	730	57	787
9	2BHK + 2T + S	870	730	57	787
10	3BHK + 2T	1040	871	88	959



FLAT 1 - 4BHK + 4T

*For internal circulation only

TOWER 1 NUTOPIA – Refuge Floor Plan - 7th, 12th, 17th, 22nd, 27th & 31st



Flat	Type	BUA (Sq. ft.)	CA without Balcony	BA	CA with Balcony
1	4BHK + 4T	1536	1281	134	1415
2	3BHK + 2T	1055	869	77	646
3	2BHK + 3T + S	853	728	25	753
4	REFUGE	NA	NA	NA	NA
5	3BHK + 3T	1159	963	83	1046

Flat	Type	BUA (Sq. ft.)	CA without Balcony	BA	CA with Balcony
6	3BHK + 3T	1138	945	89	1034
7	3BHK + 2T	1030	860	88	948
8	2BHK + 2T + S	870	730	57	787
9	2BHK + 2T + S	870	730	57	787
10	3BHK + 2T	1040	871	88	959



FLAT 8 - 2BHK + 2T + S

*For internal circulation only

Home is where you discover the real you. Siddha's aim is to develop high-quality homes within your budget and add to your pleasant discoveries. Since its inception in 1986, Siddha has been crafting residential and commercial spaces with a difference; to make good living affordable in Kolkata, Jaipur, Mumbai and Bengaluru.

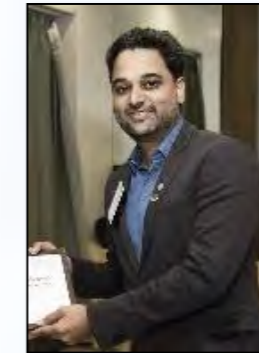
Siddha's perseverance and passion for quality homes drives it forward with every new project. Led by Group Chairman Chandra Prakash Jain and Group Managing Director Sanjay Jain, Siddha creates and sells high-quality housing in India.

Siddha believes that the magic of craftsmanship lies beyond the reality of construction. It is the ability to sculpt better lives by designing and crafting living spaces that sets Siddha apart.

ingrain

Abhay Bhonsale, is an accomplished architect and Urban designer. He is one of the founding Partners of Ingrain, a leading Comprehensive Architectural consulting firm based out of Mumbai. The firm has delivered cutting edge designs through their major projects across, contexts, locations and scales.

Abhay is known for his iconic designs, skillful command in the master planning ideas, as well has a keen eye for detail. The Siddha Serena is a product of his passion, commitment and aspiration towards creating one of the most unique, green housing projects of Kolkata.



Abhay Bhonsale

LANDSCAPE TECTONIX

Established in 2009, TECTONIX is an internationally-recognized and award-winning landscape design studio based in Bangkok, Thailand. Their design philosophy always aim to define a sense of place, to create the harmony between human and nature and to enhance the quality of life.

The firm is headed by Mr. Tu Supasit Tepumnusakul, Managing Director and currently operates with 6 studios employing 60 professionals as multi-disciplinary team who deeply share their own talent and professional experiences with strong passion in design.

They are now working with the international hotel operators and leading real estate developers for the projects throughout Asia-Pacific region from Thailand, China, India, Malaysia, Cambodia, etc.



Tu Supasit Tepumnusakul
Managing Director

The background is a rich, textured oil painting. It depicts a lush garden scene with several bright yellow flowers in various stages of bloom. The foliage is rendered in a variety of green tones, from deep forest greens to lighter, sunlit yellows and oranges. The brushwork is thick and expressive, creating a sense of depth and movement. The overall composition is dense and detailed, capturing the intricate textures of the petals and leaves.

At Siddha Serena
Life Serenades into Tranquility

Siddha at Rajarhat



Siddha Galaxia, New Town



Siddha Happyville, Rajarhat
Chowmatha



Siddha Pines, Rajarhat, Near City
Centre II - Completed



Siddha Town Rajarhat , Near
Narayanpur Bazaar, Rajarhat
Completed



Siddha Xanadu Studios,
Rajarhat, Near City Centre II -
Completed



Siddha Xanadu Condominium
Rajarhat, Near City Centre II -
Completed

Siddha's ongoing projects in Kolkata



Siddha Suburbia Apartments
Southern Bypass



Siddha Suburbia Bungalows
Southern Bypass



Siddha Sky, Off EM Bypass



Siddha Eden LakeVille, BT Road



Siddha WaterFront, Khardah



Siddha Esplanade, Chowringhee

Siddha's ongoing projects in Mumbai & Jaipur



Siddha Seabrook, Kandivali(W), Link Road Mumbai
(Handover started)



Siddha Sky, Beside GTB Monorail Station, Wadala Mumbai



Siddha Happyville, Before Toll Plaza, Ajmer Road Jaipur



Siddha Jewels II, Nathmaljee ka Katla, Agra Road Jaipur

Siddha's Upcoming projects in Mumbai



Siddha Navi Mumbai, Mumbai



Siddha Malad, Mumbai

*Names to be finalized

Our journey

- ~ 37 years legacy.
- ~ Cradling to residential, commercial, clubs and others.
- ~ 48 projects.
- ~ Delivered more than 1 crore sq ft.
- ~ Ongoing projects in Kolkata, Mumbai & Jaipur spanning 70 lakh sq ft.
- ~ 40 lakh sq ft upcoming.
- ~ Pioneered Rooftop Skywalks in India.
- ~ Won 26+ prestigious awards.

An abstract painting with vibrant green, yellow, and blue brushstrokes, creating a textured and layered effect. The colors are applied in various directions, some horizontally and some vertically, giving the artwork a sense of movement and depth. The overall composition is dynamic and expressive.

"Home is not a place; it's a feeling." - Cecelia Ahern

WELCOME
To
SIDDHA SERENA